

RAMVEK COMMERCIAL

STUNNING.INTERIOR.SPACES

Commercial Sector Fitouts. Statement of Capability



RAMVEK RAMVEK

Ramvek has vast experience in Commercial & office fitouts in Melbourne, Sydney and right across Australia and New Zealand. Whether it be a large scale, complex fitout or a smaller type refurbishment of an existing space, Ramvek has all the capabilities to provide you with an expert service.

Expertise in

INTERIOR.FITOUTS

CONSTRUCTION

PROJECT.MANAGEMENT

JOINERY MANUFACTURE

DESIGN

PROTOTYPING

OVERSEAS.PROCUREMENT



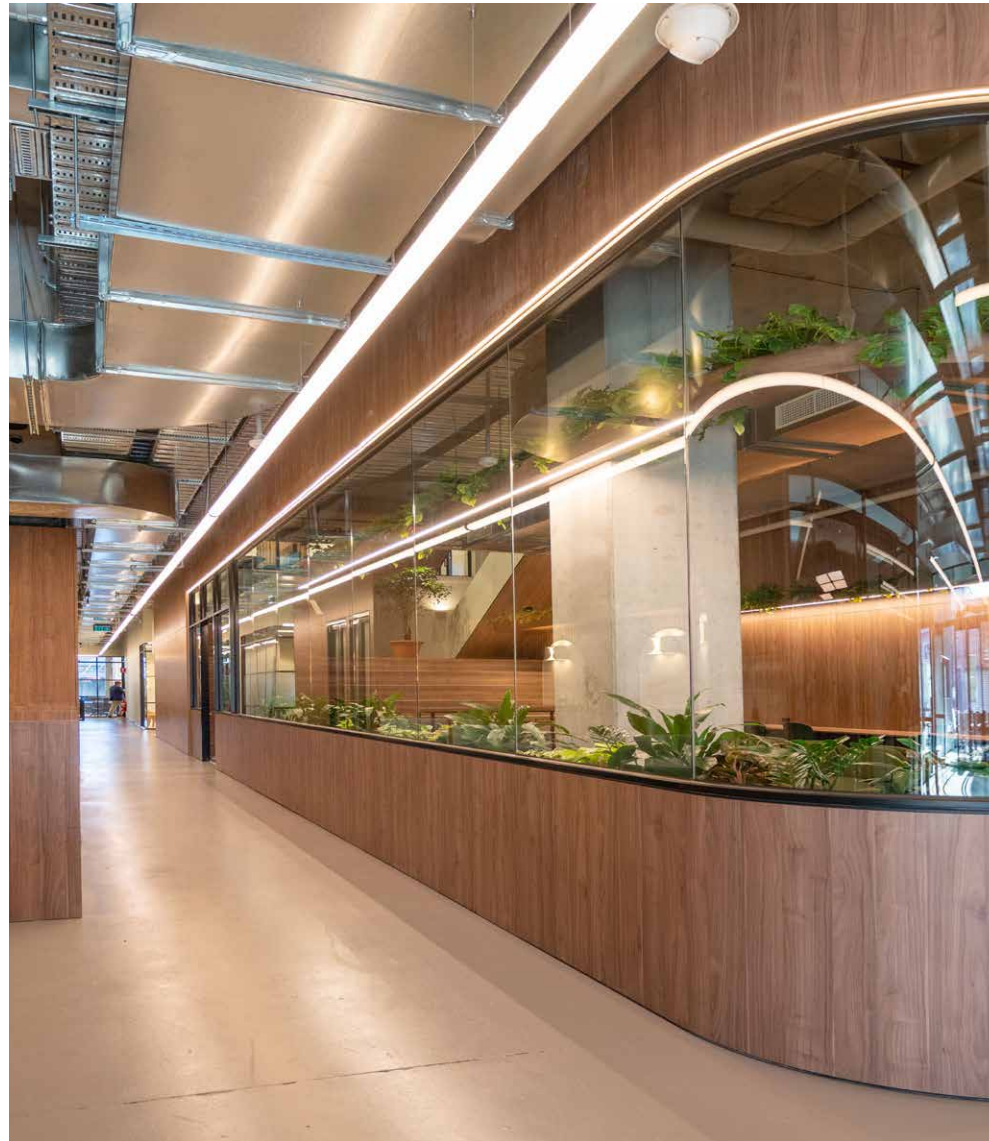
TABLE OF CONTENTS

01	About Ramvek Commercial Fitouts
05	Why Ramvek for Commercial Fitouts?
07	Our Story
09	Our Core Values
11	Environmental Policy
13	Community & Social Contribution
15	Company & Financial Information
17	Customer Focus
19	Our Services
23	Commercial Project Experience

WHY RAMVEK FOR COMMERCIAL?

We are far more than just a standard Fitout Company

- » Our own integrated 5000m2 joinery manufacturing facility giving us full project control capability
- » In House Metal Fabrication providing superior integration with project requirements
- » A dedicated Procurement Department sourcing both locally & overseas
- » Robust Quality Assurance systems ensuring best possible project outcomes
- » An in-house Design Manager ensuring our builds meet the intention of the client's design



- » A business built on relationships and repeat business
- » Highly experienced Project & Site Teams we back and believe in to deliver exceptional results
- » A company where safety is paramount
- » A hard working team who our clients enjoy working with
- » A company who thrives on complex sites and loves a challenge
- » A team who has our client's interest's in mind when making decisions
- » A stable business since 1988.



EXPERTISE
In Interior Fitouts

IN-HOUSE
Services

QUALITY
Assurance

REPUTATION
as an Industry Leader

SUSTAINABLE
Future for all Facilities

OUR STORY

Its hard to believe that this all started in 1988. Four young guys on the tools, working in a 100sqm factory in the south east of Melbourne. We were the boys from Dandenong. Those were the days before dedicated Estimating Departments, where quoting new jobs was done after hours, when all the joinery manufacturing and fixing work was done for the day.

Now more than 30 years later, we've been fortunate enough to have grown and evolved with the times. The one thing that has not changed though are our values as a company. We are still just as hard working, we are still humble and most importantly, we still



'WE STILL KNOW HOW TO GET THE JOB DONE'

We are proud to say that we now employ over 60 people locally, and have established a professional 'end-to-end' delivery team which includes Administration, Design, Project Management, Estimation, Production & Finance. Complimenting this, we have a world class office & manufacturing facility, including 5000sqm of dedicated joinery production space. Our clients, institutions both local and national and brands big and small, still trust and rely on us to deliver after all these years, and we are proud to associate our own brand with maintaining that excellent level of service that is now the bedrock of the Ramvek name. We're very proud of our beginnings, and excited about the future.

OUR CORE VALUES

- » We are humble in our approach and listen carefully to our customers needs
- » Our aim is to exceed our customers expectations
- » We are humble in our approach and listen carefully to our customers needs
- » We respect our customers and workmates
- » No matter how difficult the issue, we confront it and focus on finding the best solution for everyone
- » Our people in the company lead by example and illustrate this through their behavior
- » Our driving force is our values, and we refer to these to guide us in our dealings with others

WE HAVE FUN, ACKNOWLEDGE ACHIEVEMENT AND CELEBRATE SUCCESS

WE GO THE EXTRA MILE FOR OUR CUSTOMERS

RAINIVEK

WE ARE DEDICATED TO THE ACHIEVEMENT OF OUR GOALS
WE ARE RESPONSIBLE AND ACCOUNTABLE FOR OUR ACTIONS

WE TREAT OTHERS IN A MANNER BY WHICH WE EXPECT TO BE TREATED
WE RESOLVE ISSUES IN AN OPEN & HONEST WAY

WE LEAD BY EXAMPLE AND THROUGH OUR VALUES

ENVIRONMENTAL POLICY

Ramvek has recently undertaken another stage in its Strategic Plan to reduce our facility's overall Carbon Footprint.

We have installed over 300 solar panels, which will produce approximately 100kw of power, reducing our consumption from the electrical grid by 30%. This compliments our already installed rainwater harvesting system which re-uses collected rainwater at our facility for toilet flushing and irrigation purposes. Additionally, Ramvek sources wherever possible, FSC certified timber in our production process and we seek to maximize the utilization of all material through the use of optimizing



100KWH SOLAR
System Installed

30% REDUCTION
on energy grid reliance

RAINWATER
Collected on Site

GREY WATER
reused on site

SUSTAINABLE
Future for all Facilities

technology where possible in the machining of material. Ramvek's selection criteria for suppliers includes environmental best practice. Furthermore, our Design Manager has the recently undertaken training by the Green Building Council of Australia (GBCA). This will equip Ramvek in future to oversee design and construct projects which aim to minimise the carbon footprint of the projects we deliver.

COMMUNITY & SOCIAL CONTRIBUTION



Ramvek's link to the wider community has always been a hallmark of our business. We are proud of our strong association with Manapan Furniture, a business established in Arnhem Land by our Founding Director, Mark White.

The word Manapan is the local Yolngu word for 'Coming Together,' and that's what Manapan is all about, bringing together the best of our cultures to empower the Yolngu youth and create something special in the process.

Our driving force is to equip the local Yolngu people with full time employment through building relationships between Indigenous and non-indigenous communities working together.

OWNED & OPERATED

by Yolngu, indigenous people

SUSTAINABLE

Use of Timbers

EMPOWERING

Locals with Employment

ALPA

Associated

CREATING

A Sustainable Future



Through Manapan's work with the local youth, the Yolngu are gaining the skills and qualifications that will sustain their community for many future generations and The Manapan Academy is raising up the next generation of indigenous craftsmen, ensuring a self-sufficient future.

Ramvek's connection with Manapan, is one we are most proud of. We'd like to think that we are giving back in a way that creates sustainable futures for the Yolngu by creating strong employment opportunities. Rather than just a one time donation, Ramvek is committed to a continued investment that will empower these amazing business and craftspeople for generations to come.



≡ MANAPAN ≡

COMPANY & FINANCIAL INFORMATION



Ramvek's Financial Capacity

In its 35 years of business Ramvek has maintained a conservative business approach ensuring we provide services and undertake projects within our financial capabilities.

The financial practices within Ramvek ensure the preparation of management reports on a monthly basis. Senior management review these financial reports ensuring we are ahead of both industry and statutory obligations. On an annual basis the company's financials are independently prepared to ensure compliance with Australia Tax Office, Accounting Standards and ASIC requirements.

With strong financial management the business has been able to consistently grow through various economic climates.

Having ownership of a significant manufacturing and distribution facility based in Melbourne contributes to the reliability in supply.

Furthermore, our strong financial position ensures we can adequately cover upfront expenditure on all manner of projects, also ensuring that bank guarantees can be secured as required.



Registered Company Name: Ramvek Pty Ltd

ABN: 30 006 920 529

ACN: 006 920 529

Postal/Delivery Address: 11 Chapel Street,
Lynbrook VICTORIA 3975

Phone Number: 03 9794 9342

Date of Incorporation: 15/02/1988

Directors: Bill Redmond
Mark White

Company Type: Privately Owned

A CUSTOMER CENTRIC TEAM

Ramvek has a customer centric focus which has served the company well for decades.

All team members are empowered and encouraged to be accountable for their work and remain steadfast to Ramvek's Core Values.

The entire Ramvek team is committed to the same goal of delivering the highest quality outcomes for all of our customers.

Our valued customers are truly at the centre of everything Ramvek does.



OUR SERVICES



CONSTRUCTION

Services

Ramvek's Construction Team work closely with our internal Fitout Team on all manner of projects that require structural building work. They have the knowledge and skills to complete quality builds, for both small and large scale projects.

We've worked on a wide range of complex projects for institutions and companies in capital cities and beyond, and have the ability to completely transform your educational or commercial space.



PROJECT

Management

At Ramvek we have a highly skilled and experienced Project Management division who are ready to handle your commercial fitout project from start to finish. Our Project Management division operates throughout Australia and includes dedicated Project Managers, Coordinators and Assistants who fully understand the needs of our educational & commercial clients.

We have the capability and flexibility to see the entire process of your commercial fitout through, from concept to completion. We offer a turnkey service from design to construction,



DESIGN

Team In-House

The Ramvek Design Lab are our in house team who provide our clients with commercial design & documentation solutions. Our talented and experienced team are made available to all projects, assisting with formulating design and construct solutions and reviewing functionality, all underscored by a thorough knowledge of relevant Building Codes & Australian standards.

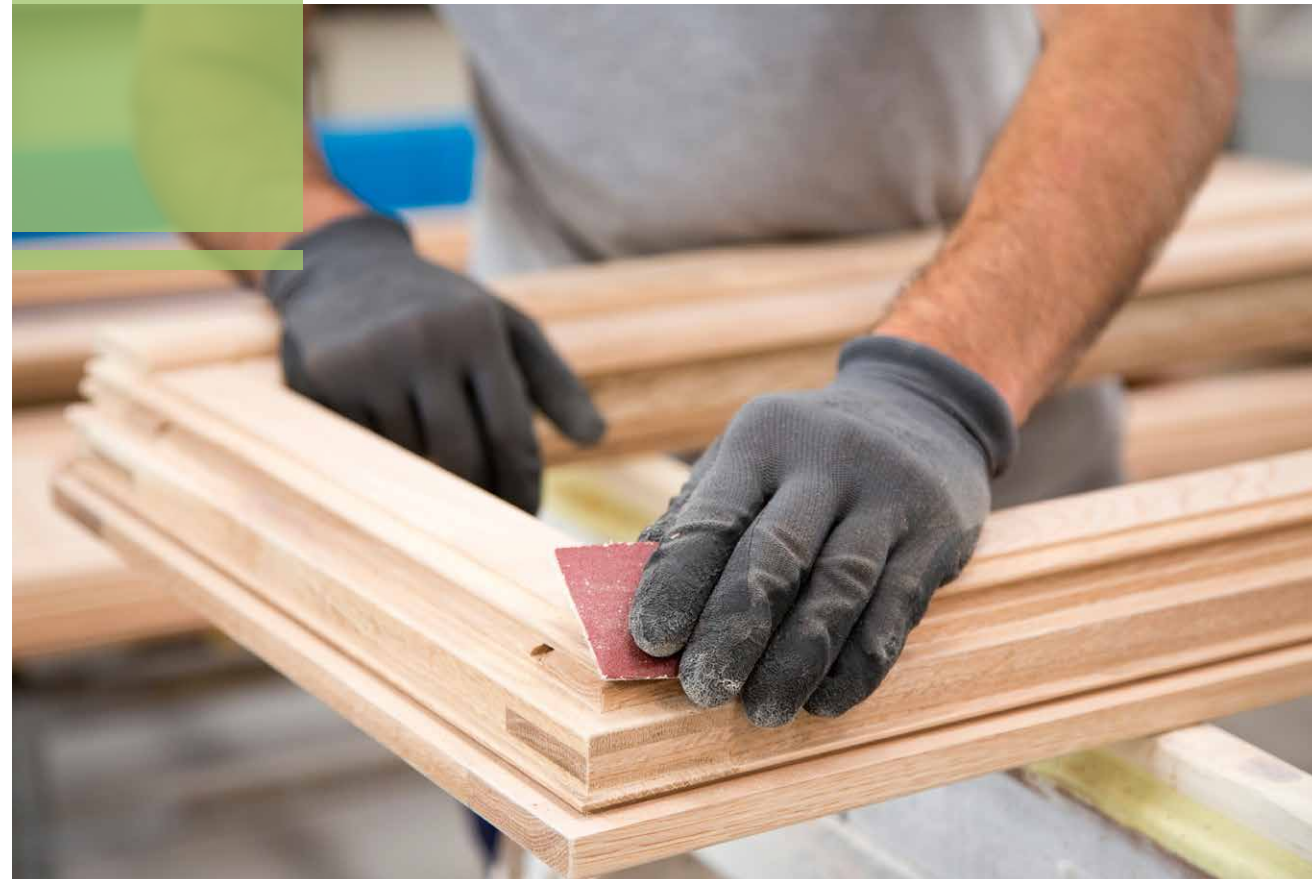


INTERIOR

Fitout Services

Ramvek's Fitout Team delivers all manner of commercial projects across Australia. We are proud to say that over the 34 years we have been in business, we have been fortunate enough to establish a reputation for producing the highest quality fitout work.

OUR SERVICES



JOINERY

Manufacture

In Ramvek's 5000m2 facility in Melbourne, we produce quality commercial joinery for projects of all sizes. Within our facility our experienced team of qualified joiners combined with our strict quality control processes ensures your education or commercial joinery items are always completed to the highest standards.



OVERSEAS

Procurement

Since 1999 Ramvek's overseas procurement and manufacturing division has been an integral part of our supply chain. Our Melbourne based team work closely with our international teams on the ground at the manufacturing site. At Ramvek, our logic is to apply our knowledge and proven processes in a "hands on" manner with our overseas partners to ensure a quality result.



MAINTENANCE

Services

Ramvek's maintenance division, RM Site Care, covers all States and Territories of Australia and utilises our network of expert teams throughout the country.

RM Site Care works closely with our clients to implement a maintenance program to meet their specific needs. We'll provide solutions for both scheduled and preventative maintenance and "on demand" requests.



PROTOTYPING

Capabilities

We have a dedicated in-house Prototype Room where we have the ability to setup complete template units in a proper context with specified lighting for both client and internal review purposes. This gives us the advantage of knowing that key pieces arrive on site just as they should be.

We have been fortunate to have Apple as a long time client and as a company they demand perfect finishing on their units and do not leave anything to chance.

PROJECT
EXPERIENCE

THE COMMONS CREMORNE



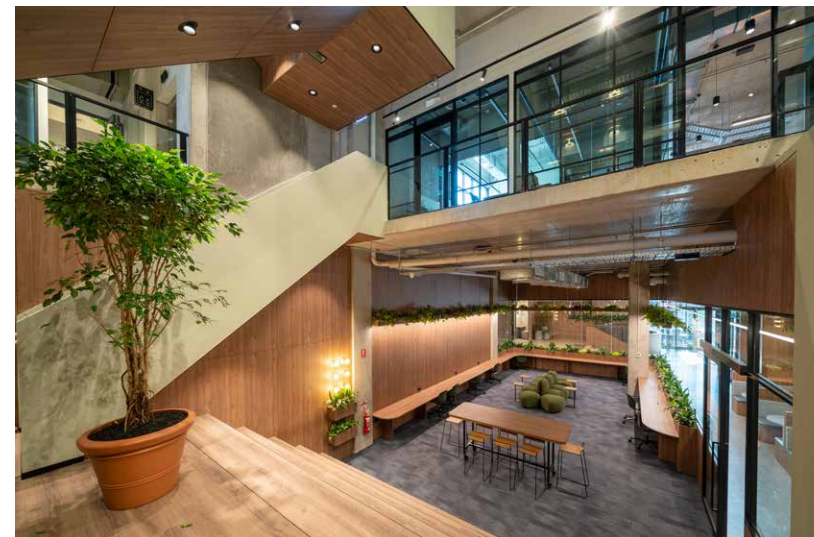
YEAR
2020

TYPE
Commercial

SIZE
4000sqm

LOCATION
Melbourne

STATUS
Complete



Working with an esteemed design team, Ramvek is proud to have delivered what is The Commons' largest site to date.

In partnership with our client, we transformed a dilapidated industrial shell in Cremorne, Victoria, into this world class, co-working & collaborative haven for creators and entrepreneurs alike.

This project continues to set the benchmark across the industry for co-working spaces.

INVISALIGN

Invisalign is a worldwide icon in the invis-orthodontics markets.

Using a stunning commonwealth era heritage building for its backdrop in the central Sydney CBD at 350 George St, Invisalign has create an elegant solution for its latest showroom.

Bespoke joinery with Bold brand colouring work in harmony with the solid



YEAR
2018

TYPE
Commercial

SIZE
200qm

LOCATION
Sydney

STATUS
Complete

elements comprising the grand base building, this one is a must see and striking commercail premises.

THE COMMONS STH MELBOURNE



Working with an esteemed design team, Ramvek is proud to have delivered what is The Commons' largest site to date.



In partnership with our client, we transformed a dilapidated industrial shell in Cremorne, Victoria, into this world class, co-working & collaborative haven for creators and entrepreneurs alike.

This project continues to set the benchmark across the industry for co-working spaces,

KRONGOLD PDG

YEAR

2016

TYPE

Commercial

SIZE

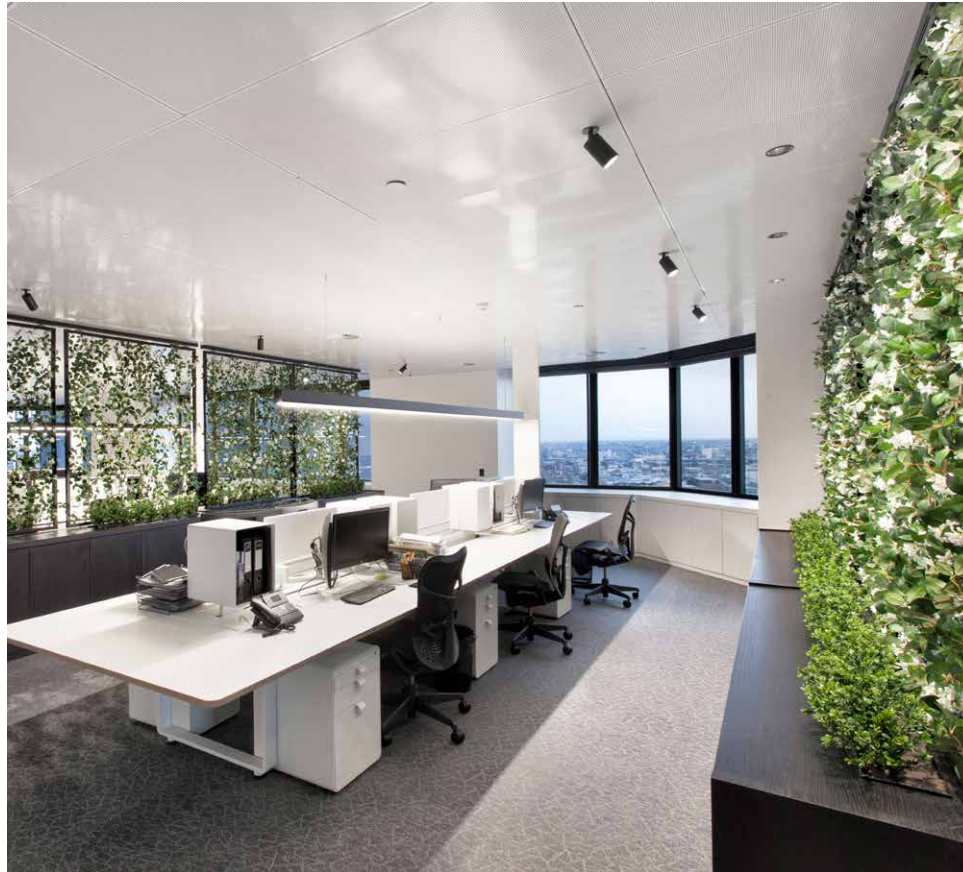
300sqm

LOCATION

Melbourne

STATUS

Complete



Ramvek worked closely with Krongold Construction to manufacture and install joinery within PDG's new office fitout at level 17, 501 Swanston St, Melbourne. The result is timeless combination of subtle timber textures, accented with modern lines



throughout the design. Effective use of landscape elements have also been worked through the design to soften the feel of spaces and bring a sense of tranquility to this elegant work environment.

We're proud of this stunning result which contributes to the ever-changing trend in workspace design and culture, making work environments more collaborative and dynamic in appearance.

BANKFIRST

From concept through to fitout, including commercial joinery manufacturing at our in-house Melbourne facility, Ramvek completed this design and construction project for Bank First at Moonee Ponds in January 2019.

The new, modern branch for this mutual bank is designed to put customers first, ensuring their everyday banking needs are dealt with efficiently.



YEAR
2019

TYPE
Commercial

SIZE
400qm

LOCATION
Melbourne

STATUS
Complete

The inner-suburbia Melbourne shop fitting project featured a reception area, glass-door meeting rooms and meeting nooks within the space accessible to bank customers, as well as an open-plan office fitout and boardroom.

FLINDERS BANK



Ramvek handled joinery manufacturing for SB3's build of the Flinders Bank display suite, utilised by Century Group Aus for sales of luxury residences within the high-end mixed-use development in Melbourne, project managers Sinclair Brook. This project included



having been brought on board by project managers Sinclair Brook. This project included hand-crafted curved timber features, stone benchtops and polished brass trims.

ALBA SPRINGS

There is a new player in the thermal hot springs world, and they have spared no expense in creating what is sure to be regarded as one of the world's finest mineral spring experiences.

Ramvek is delighted to have partnered with Alba Thermal Springs to deliver their on-site restaurant, Thyme, located at their amazing 15-hectare property at Mornington Peninsula.



YEAR

2022

TYPE

Commercial

SIZE

200qm

LOCATION

Melbourne

STATUS

Complete

Iba Thermal Springs has recently opened its doors and are already making quite the stir in the news.

Headed by celebrity chef Karen Martini, the flavours and dining experience are sure to be top-notch!

We are extremely proud to have been a part of such an amazing project located on an equally spectacular development.

POINTS BET

YEAR

2018

TYPE

Commercial

SIZE

800sqm

LOCATION

Melbourne

STATUS

Complete



PointsBet wanted to create a space both functional and team focussed. Each team needed to connect, however acoustic separation was vital for productivity, and our design balanced these competing requirements carefully. As an innovative, tech driven,



enterprise they wanted the space to be slick and efficient and of course as sport is at the heart of the business it plays a central part in the design outcome of the space.

After a successful design process by RDL, the Ramvek build team then delivered the construction and manufacture of the 800 sq.m. fitout including all the joinery and office fixtures. A complete the end to end design and construct project.

thankyou.

See our full Commercial Works Portfolio [here](#)

Have a project you'd like to discuss?
We'd love to hear from you

Feel free to reach out to us :

P: (03) 9794 9342

E: enquiries@ramvek.com.au

11 Chapel St, Lynbrook, VIC 3975

We look forward to partnering with you to bring you ideas to life!



RAMIVEK