

RAMVEK DESIGN LAB

BEAUTIFULLY.DESIGNED.
SPACES

Retail, Commercial, Community & Hospitality
Sector Design



RAMVEK DESIGN LAB RAMVEK DESIGN LAB

Ramvek Design Lab (RDL) is the creative arm of the Ramvek company. The driving force behind all our interior design work is to create beautiful, contemporary, Retail, Commercial, Hospitality and Community spaces.

At RDL, we understand the importance that interior design has on the fit out of your retail space, hospitality venue or offices. Our in house creative team can craft designs that meet the specific requirements of your company as well as emphasise and utilise the important aspects of your space. We provide a range of specialist services which cover all of your design and documentation needs.

We believe design has the capability to establish brand's reputation and set it apart from its competition. With experts in all retail, commercial or hospitality design, our design team will create inspiring and dynamic environments that capture your customer's attention. Our team is adept at understanding and extracting a brief, creating options, developing a successful idea and finally bringing the project to life through detailed documentation & drawings that will be used for construction and any necessary town planning or building permits

Expertise in

CONCEPT.DESIGN

3D.VISUALISATION

TOWN.PLANNING¹

DESIGN.DEVELOPMENT

CONSTRUCTION.
DOCUMENTATION

PERMITS¹

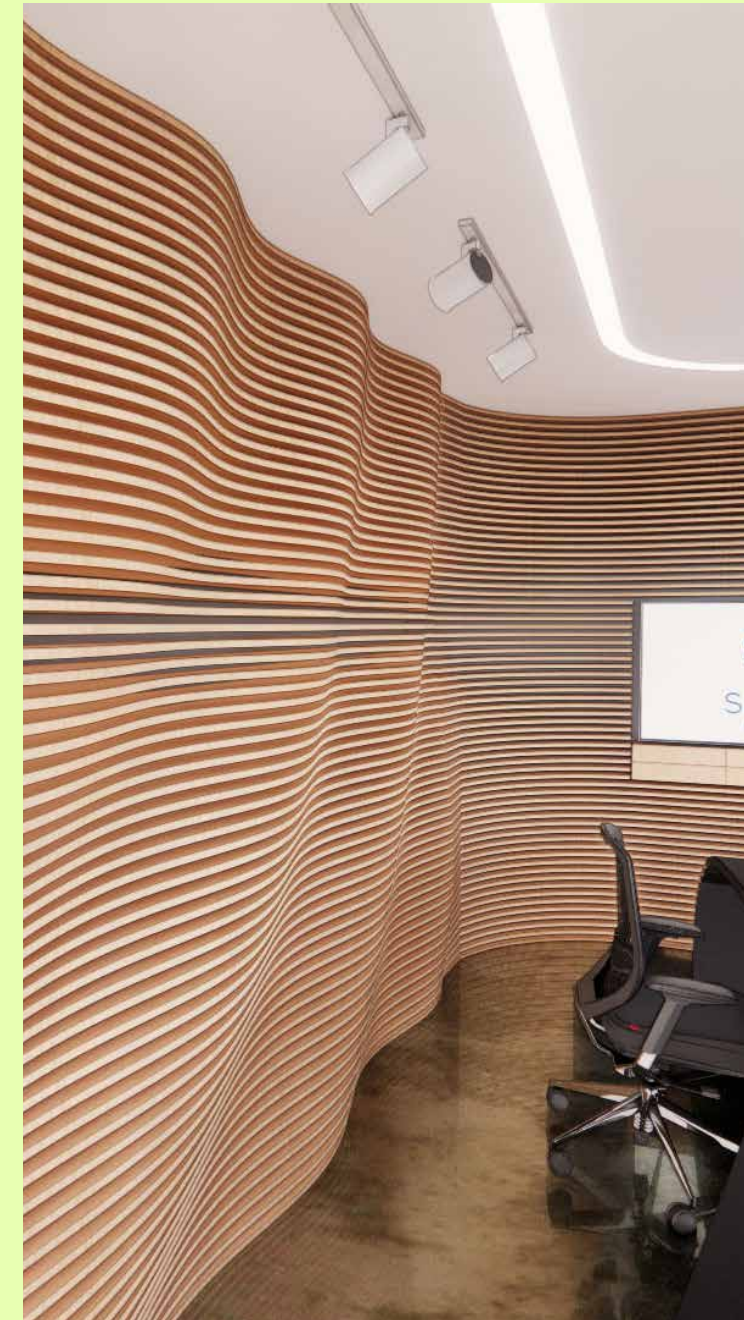


TABLE OF CONTENTS

01	About Ramvek Design Lab
05	Skinceuticals Flagship Store
07	Sennheiser Flagship Store
09	PGH Bricks Selection Centre
11	Bankfirst
13	Caesarstone Flagship Showroom
15	Simba Global Boardroom
17	ASKO Showroom
19	Skinceuticals, Chadstone
21	Wintjiri Art Gallery
23	ALPA Photographic Exhibition
25	Prosecco Restaurant
27	Simba Global, CEO Office

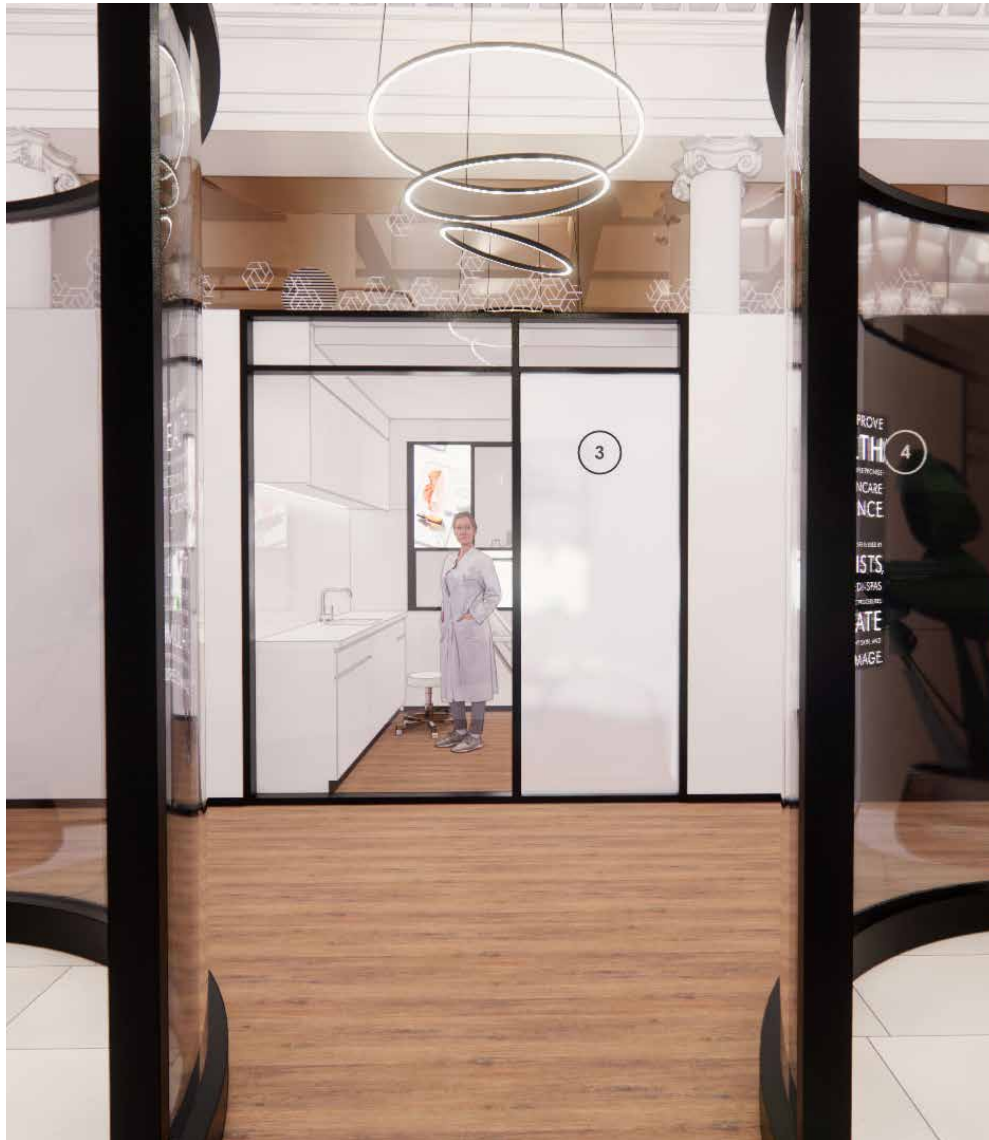


RETAIL

SKINCEUTICALS FLAGSHIP, MELBOURNE

SkinCeuticals is a world leading skincare specialist offering a broad range of treatments. Dedicated to creating potent, effective and science based products.

SkinCeuticals approached RDL to design and deliver their worldfirst flagship store, combining retail & clinical offers, showcasing



treatments and message. The resulting finishes and colours form an elegant and inviting atmosphere while reinforcing the high end nature of the brand. Use of reflective gold mirrors, onyx stone and feature blue fabrics, create a striking palette which will be sure to draw attention to this new store. Ramvek is proud to partner with this brand to establish the first store of this kind worldwide for the brand.



YEAR
2021

TYPE
RETAIL

SIZE
300sqm

LOCATION
Melbourne

STATUS
Complete



SENNHEISER

RETAIL

SENNHEISER FLAGSHIP, SYDNEY

Sennheiser worldwide is united in shaping the future of audio and creating unique sound experiences for customers.

Founded in 1945, Sennheiser today is one of the world's leading manufacturers of headphones, loudspeakers, microphones and wireless transmission systems. To help expand their local presence they secured a premiere retail space in the iconic old banking hall of the commonwealth bank building in Pitt St Sydney. They then engaged to Ramvek for the design and delivery of their high-end, immersive retail store located on this historically significant site.



YEAR

2019

TYPE

RETAIL

SIZE

400qm

LOCATION

Sydney, CBD

STATUS

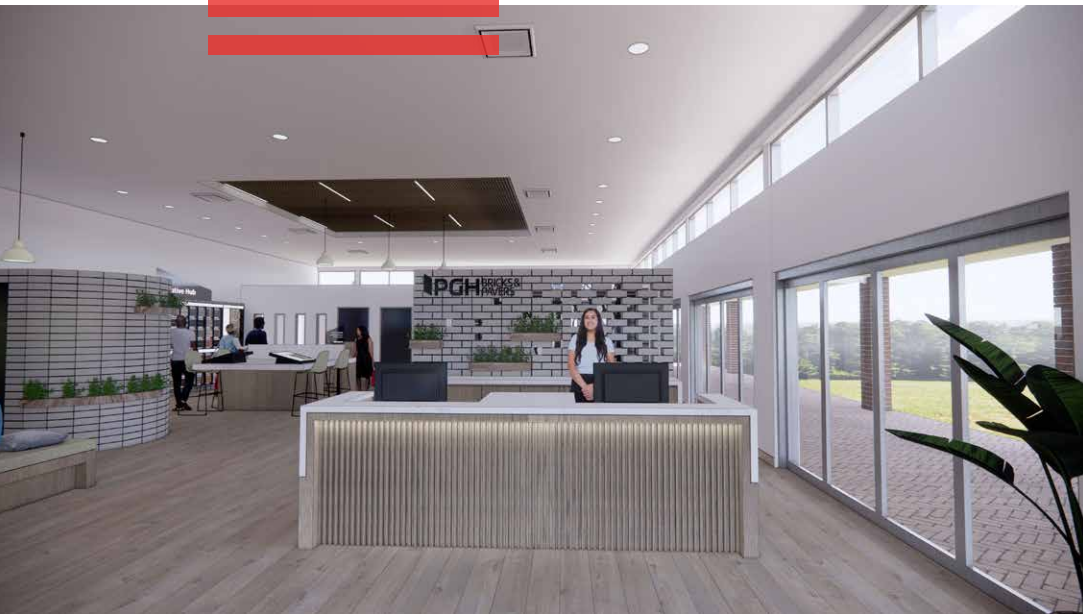
Complete

The products Sennheiser offer are carefully detailed and high technically developed, their emphasis is on the delivery of great sound as efficiently as possible. This attitude is reflected in the space, restrained product display, minimal materials selection and excellent acoustics. Because of the buildings heritage restrictions, the space could not have a ceiling. This made maintaining an environment for demonstrating audio equipment a challenge. RDL coordinated to with an acoustic engineer to deliver a space that not only looked good but sounded excellent as well.



COMM-
ERCIAL

PGH BRICKS



All Australians know PGH Bricks, the name has been synonymous with quality brickwork for decades.

The company has been around from 1958 when the building companies established by Maxwell Porter and David Galbraith (incorporated in 1899 and 1949 respectively) merged with Hanson Consolidated industries. PGH Bricks & Pavers is one of Australia's largest brick manufacturers. It offers a broad range of bricks and pavers for residential, architectural and commercial applications on Australia's East coast.

YEAR
2019

TYPE
COMMERCIAL

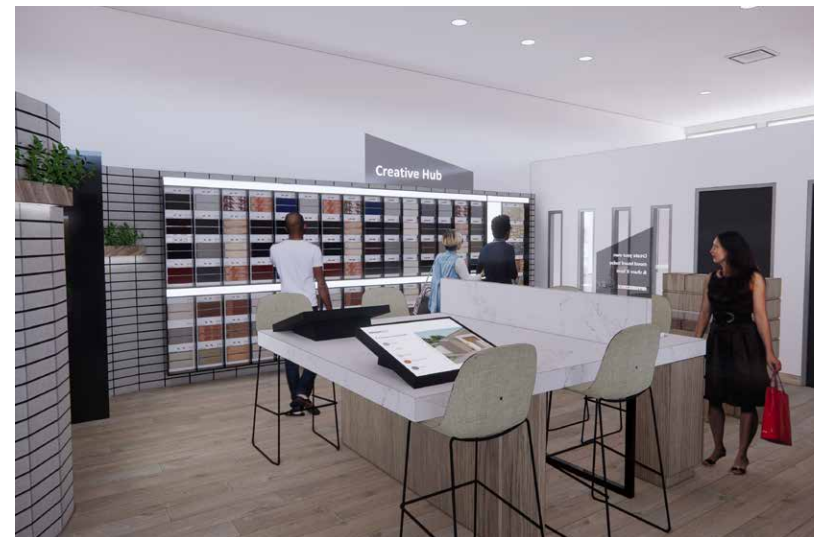
SIZE
200sqm

LOCATION
Sydney

STATUS
Concept



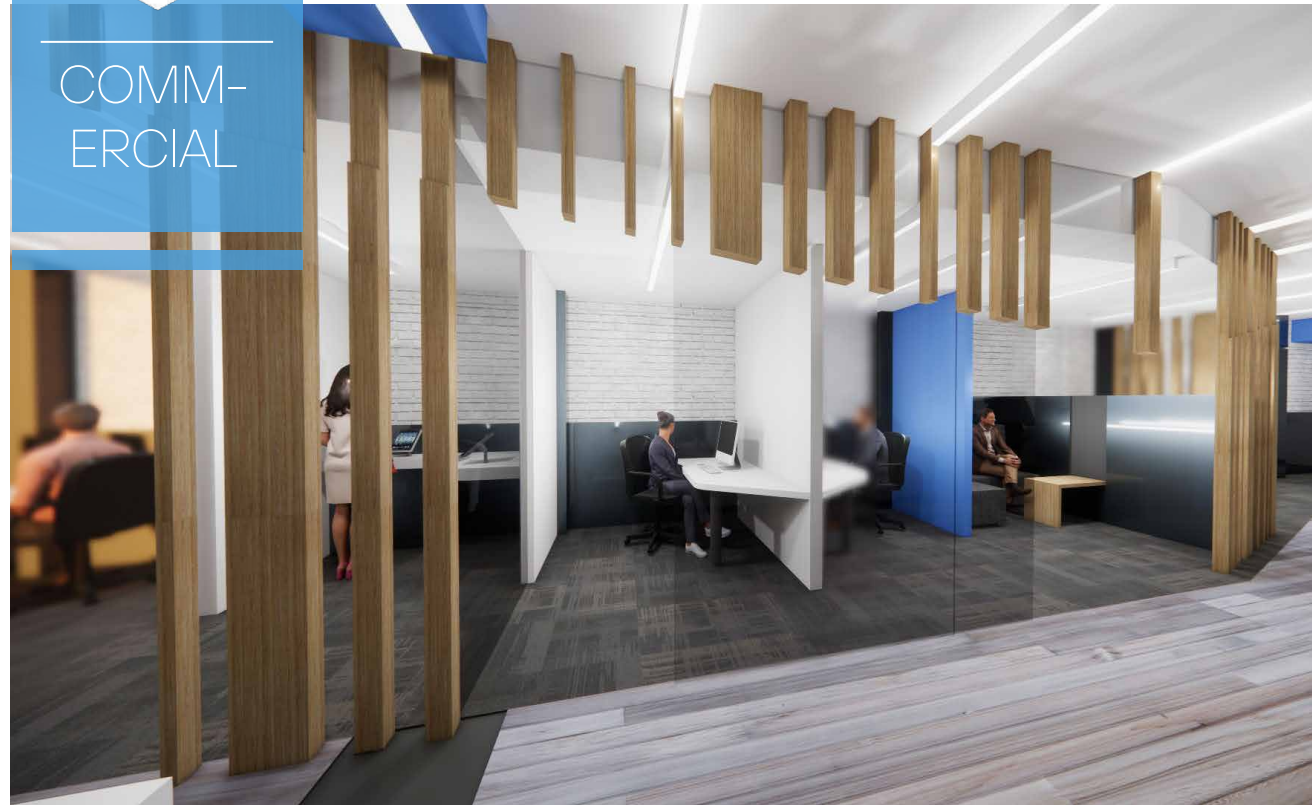
PGH approached RDL with a vision to re-imagine the customer journey for their existing Selection Centre showroom based at their Schofields, NSW complex. The result is a celebration of brickwork, showcasing the material in many of its possible compositions and arrangements. We wanted the bricks to shine above all else, and for customers to be inspired not only by the products, but the showroom itself.





BANKFIRST

COMM-
ERCIAL



YEAR
2019

LOCATION
Melbourne

TYPE
COMMERCIAL

STATUS
Complete

SIZE
400sqm

Bank First began as the Victorian Teachers Mutual Bank.

A small local bank with only 3 branches, they are driven by their founding values of putting customers first. When they were ready to open a new Branch in Ascot Vale they secured a high street shop as a shell. Their intention was to completely refurbish the dilapidated shopfront into new retail branch and corporate office facility.



RDL was engaged to design the new branch. The space we created is focussed on customers and customer care. We wanted to maintain a community hub feel whilst creating a modern welcoming branch, warm and professional. It also includes the office facilities and amenities, a comfortable open plan environment for staff to collaborative in a light filled space.





RETAIL

CAESARSTONE SHOWROOM



YEAR
2020

TYPE
RETAIL

SIZE
200sqm

LOCATION
Sydney

STATUS
Concept

Caesarstone produces engineered quartz surfaces.

The famous brand is defined by its continuous quality and excellence in its manufactured products. Caesarstone surfaces are in high demand for residential and commercial interiors where they are applied to kitchen bench tops, splashbacks, bathroom vanities, wall panelling, furniture and more.

The company's existing Sydney showroom had become too small for the growing business and the design was poorly lit and outdated. The adjacent Tenancy became available, so they took the opportunity to grow and improve their showroom. Caesarstone asked RDL to create a masterplan and a concept design for their new showroom and Design Centre. The design included a staging program that allowed the business to remain operational throughout the various stages of construction.



The RDL design provides retail displays, products showcases and a modern new showroom that integrates both the new and old spaces effectively. The Design Centre enables sales consultants to lead clients through the design options for new kitchens and bathrooms. Caesarstone partnered with a number of complementary finish supplies to allow customers to develop a material finishes board in a one stop shop. To help achieve this we designed a number visualisation tools and separate consultation booths for the quiet contemplation of finish choices.



COMM-
ERCIAL

SIMBA GLOBAL BOARD ROOM



YEAR
2021

TYPE
COMMERCIAL

SIZE
50qm

LOCATION
Melbourne

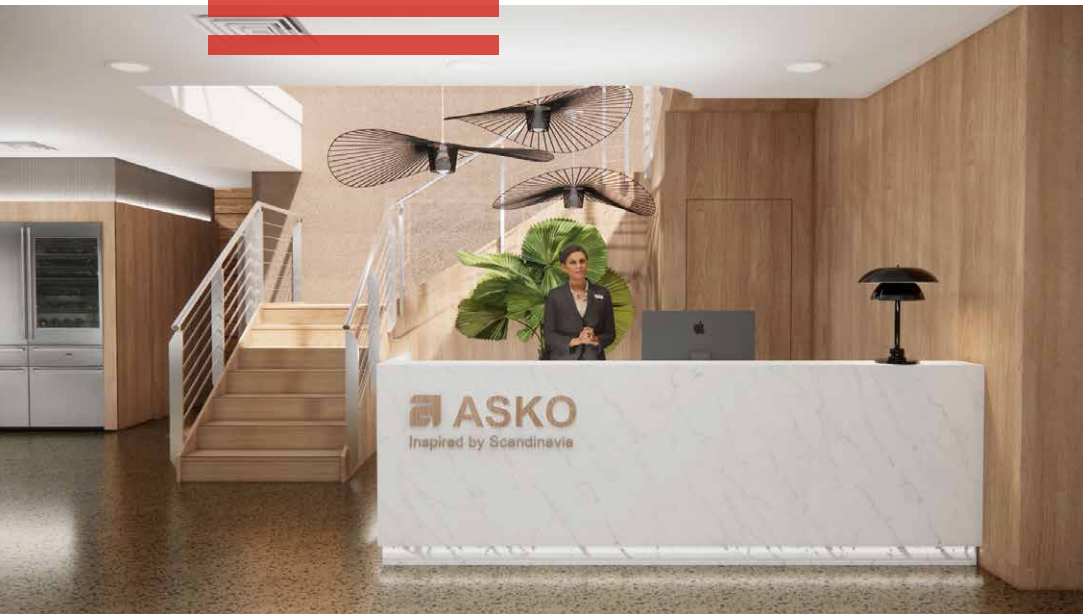
STATUS
Concept

Starting with an innovation mindset and never making your problem your customers problem, Simba Global approached Ramvek to provide concept design for a proposed redesign of their boardroom space. The result is a multi use room, suitable for both large and smaller gatherings. The element of presentation was high on the agenda, and as such certain spaces within the room become integrated textile displays and storage. Based upon a conceptual framework centred on textiles and ribbon forms, the elements created are true to the DNA of the company.



COMM-
ERCIAL

ASKO SHOWROOM



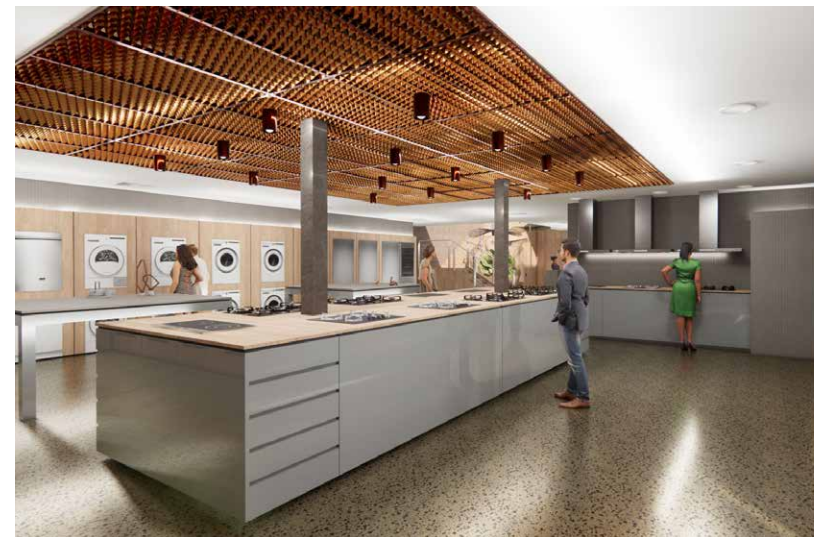
YEAR
2020

TYPE
COMMERCIAL

SIZE
200sqm

LOCATION
Melbourne

STATUS
Concept



Every ASKO product is designed & built with Scandinavian quality and environmental sensitivity, just as its founders intended.

ASKO asked RDL to imagine a refreshed concept design for their retail showroom and selection centre. The design aesthetic was to speak clearly of the company's Scandinavian roots. The new showroom enables sales consultants to lead clients through the process for selecting new kitchen appliances. Included are several new displays for the range of kitchen appliances, and a teaching area where customers can engage with the appliances prior to purchasing. The RDL design also includes an engaging waiting area where customers are able to interact with elements of the company's proud history.



RETAIL

SKINCEUTICALS, CHADSTONE

YEAR
2021

TYPE
RETAIL

SIZE
50sqm

LOCATION
Melbourne

STATUS
Concept

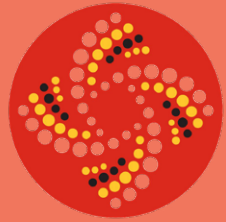


Ramvek was approached to provide a dynamic new concept for a new SkinCeuticals store in store for one of Australia's most high profile retail complexes. Incorporating the primary visual elements of the brand,



We crafted this exciting proposal using the iconic hexagon landmark as the cornerstone. Utilising a variety of lux finishes and materials, this store is sure to draw attention from even the most discerning customer.





COMM-
UNITY

YEAR
2019

TYPE
COMMUNITY

SIZE
300sqm

LOCATION
Ayers Rock

STATUS
Concept

WINTJIRI ART GALLERY



Wintjiri Gallery & Museum is a key feature in the iconic Uluru resort at Yulara in the Northern Territory.

The Gallery and Museum was originally built in the mid 1980's as part of the resorts development. After successfully operating for 35 years the buildings and the facilities were starting to show their age. The owner-operator Voyages, came to RDL to design and build a new fitout to suit their current needs and give the existing buildings a new lease on life.



Our design is a refreshed modern gallery that responds to its red centre context. The colours and plantings to the exterior give the sense of an oasis. While the interior materials and finishes have been carefully considered to create a neutral backdrop on which to display the vibrant works of the local Artists. The main gallery is a flexible multipurpose space that can accommodate a range of operations including functions, Artist residencies, curated tours and cultural learning. Contemporary multimedia displays are hidden in the bulkheads and the floorplan can be instantly reconfigured via the large custom movable display walls.



COMM-
UNITY

ALPA PHOTOGRAPHIC EXHIBITION

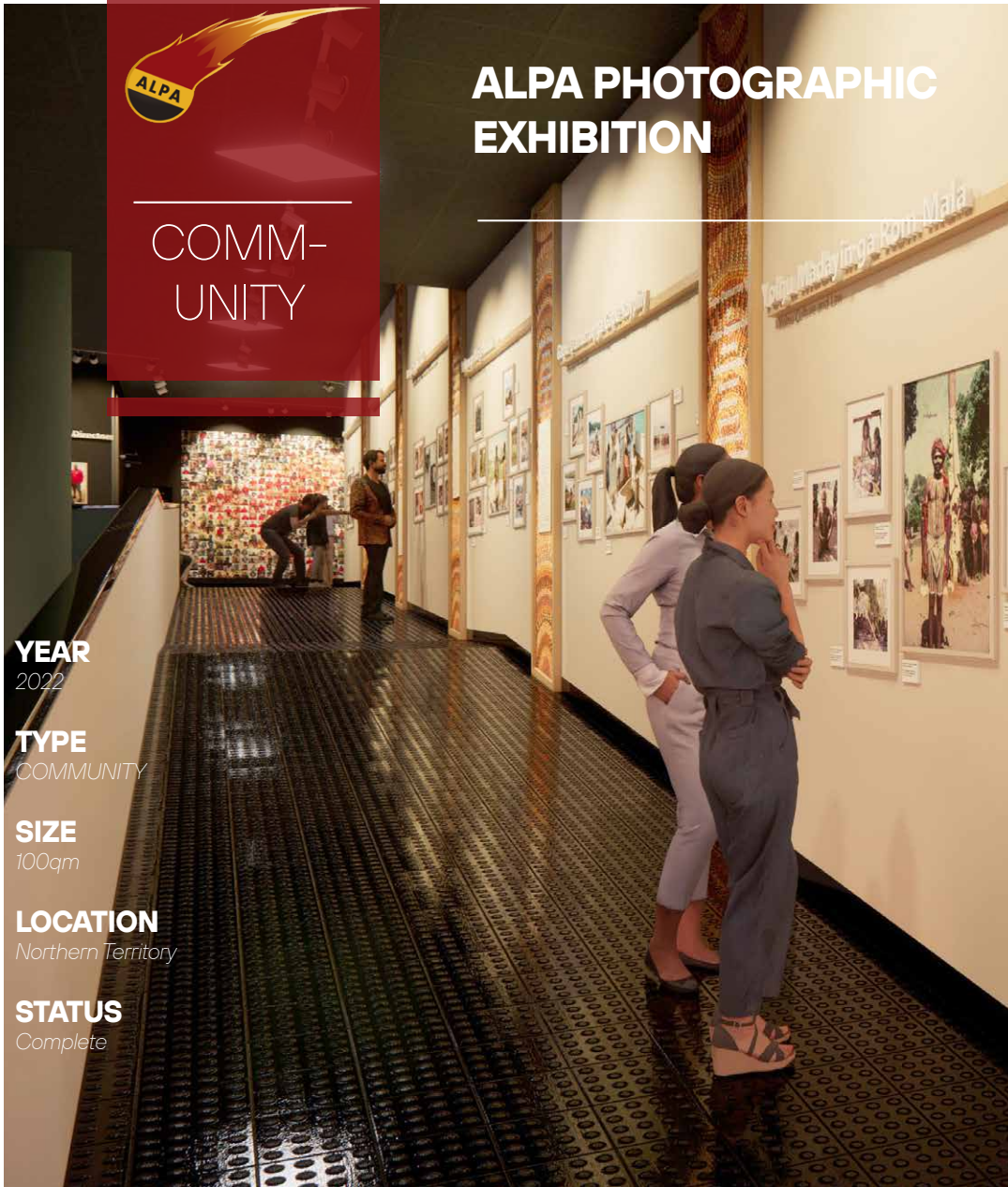
YEAR
2022

TYPE
COMMUNITY

SIZE
100qm

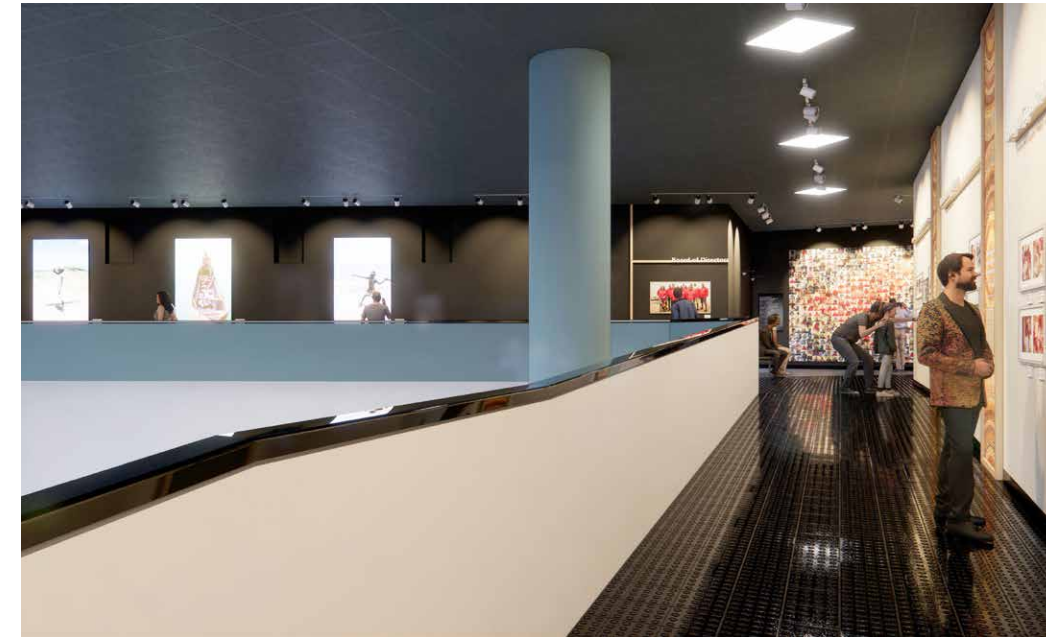
LOCATION
Northern Territory

STATUS
Complete



Ramvek was commissioned to design a photographic & multimedia exhibition showcasing 50 years of indigenous communities and their enterprise pre-1972 to current day.

Our in-house DesignLab team, working closely with the teams ALPA and Museum and Art



Gallery of the Northern Territory, (MAGNT) has thoughtfully crafted a stunning series of displays for the event.

The exhibition named 'Gumurr'manydji Manapanmirr Djäma' (Making successful business together) launched in June 2022 at MAGNT.

This great event would not have been made possible without the assistance from the AusGov Office for the Arts through RISE.



HOSP-
ITALITY

Prosecco Italian restaurant is modern Italian cuisine, they asked us to provide a concept design for a new bar and bistro to be built in the new Riverdale village town centre, located in Tarnet, Victoria.

PROSECCO RESTAURANT, MELBOURNE



YEAR
2020

TYPE
HOSPITALITY

SIZE
100qm

LOCATION
Melbourne

STATUS
Concept

Their brief was, traditional Italian flavours and values, in a modern setting. Our fresh design features natural timbers on the floors and ceiling, with clean bold lines and finishes. The colour palette is restrained but vibrant and the natural light of the site allowed for feature planting throughout the interior.

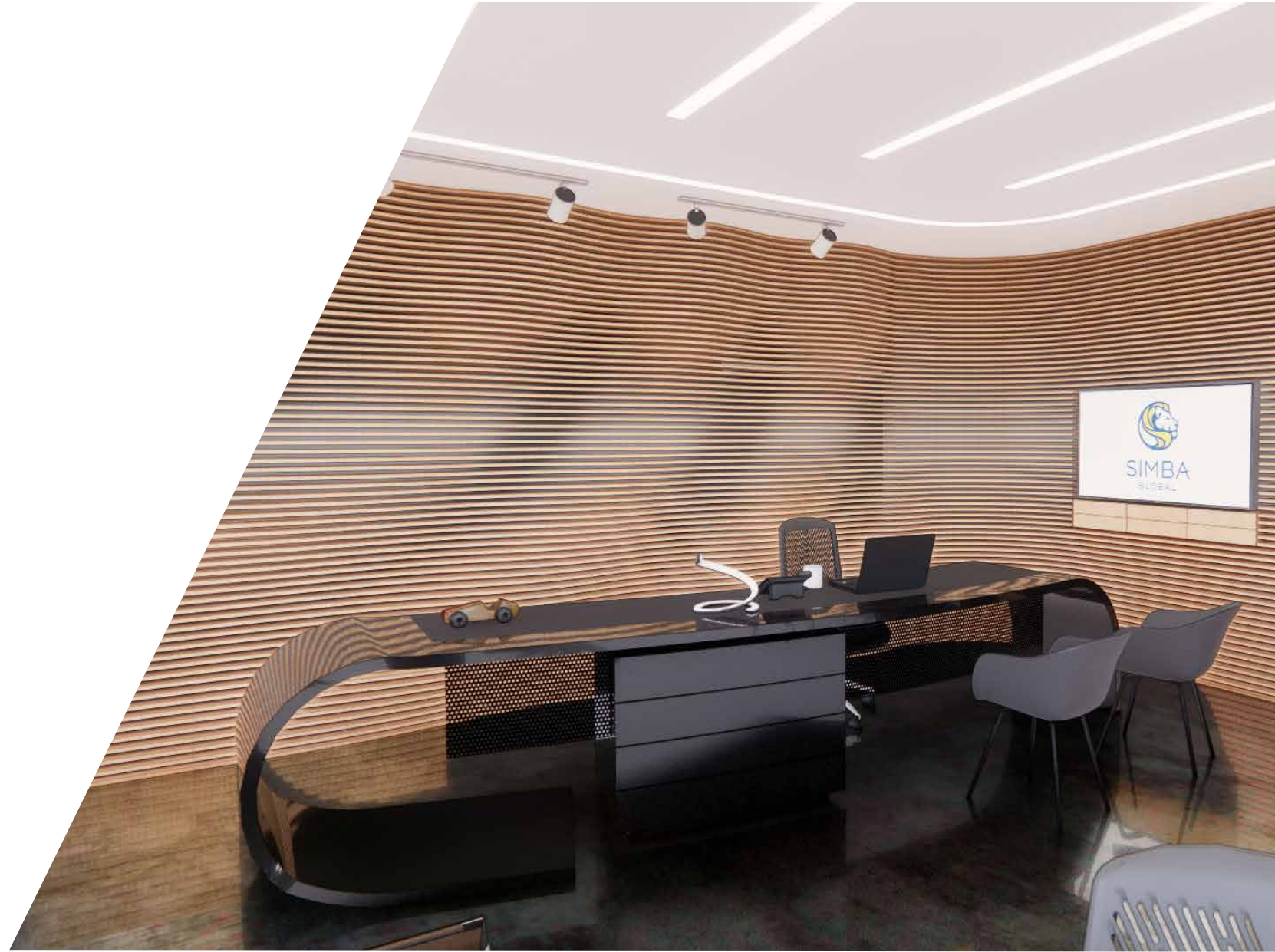


COMM-
ERCIAL

SIMBA GLOBAL CEO OFFICE

Simba Global CEO office is a market leader in the textile space and believes in the values of family first.

Simba Global approached Ramvek to provide concept design for a proposed redesign of their CEO's office. The brief for the room was to create something with a wow factor and visually suggestive of the company's core products as well as a strong vision to the future. The result is sophisticated, bold parametric wall forms, which became the design language epicentre for the entire project.



YEAR

2021

TYPE

COMMERCIAL

SIZE

50qm

LOCATION

Melbourne

STATUS

Concept

thankyou.

Learn more about Ramvek Design Lab **here**

Have a project you'd like to discuss?
We'd love to hear from you

Feel free to reach out to us :

P: (03) 9794 9342

E: enquiries@ramvek.com.au

11 Chapel St, Lynbrook, VIC 3975

We look forward to partnering with you to bring you ideas to life!



KRAIV